



SOLUTIONS FOR PRESSURE CAR

INDUSTRY LEADING PERFORMANCE,
SAFETY & RELIABILITY



TRANSQUIP
U.S.A. INC

TRANSQUIP...

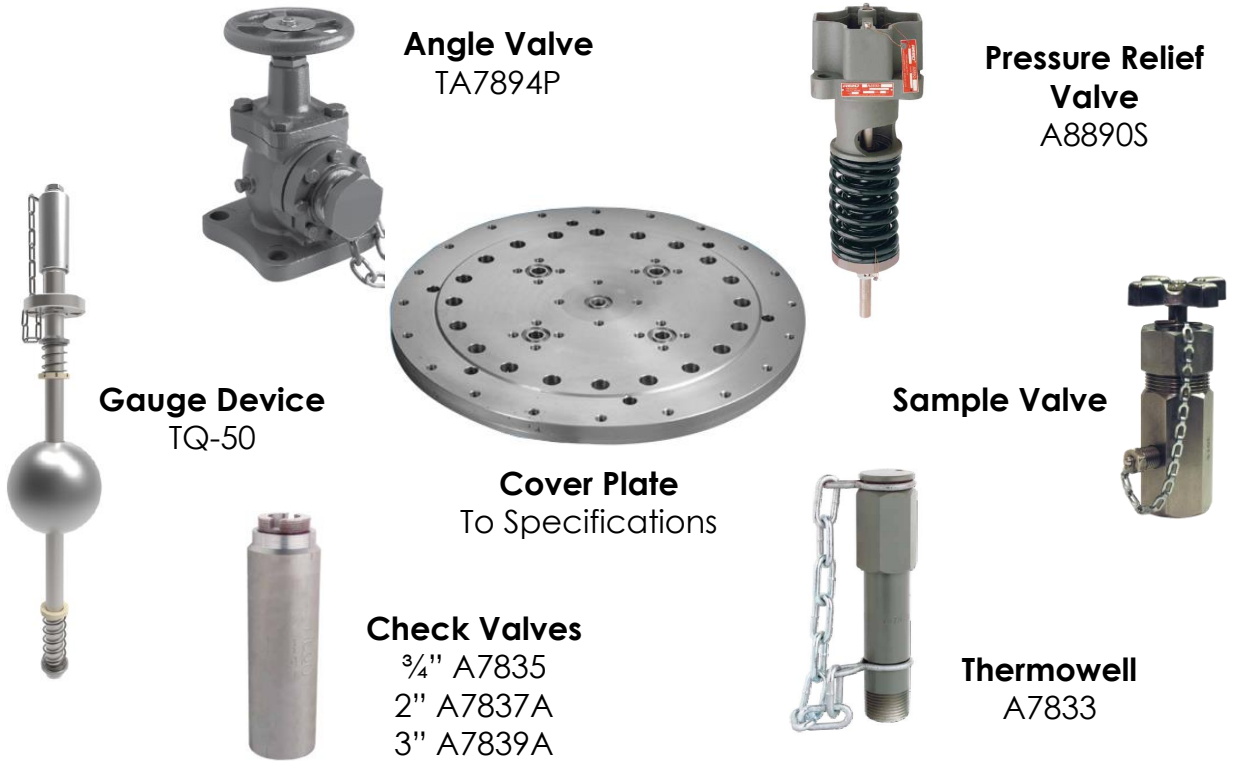
As North America's leading tank car supplier of service components and custom engineering services. All the major car builders, lessors, shippers, repair shops and loading facilities rely on TransQuip to provide a comprehensive selection of industry leading products, technical advice and unrivaled sales support.

The following pages highlight products that exceed all FRA & Transport Canada testing and regulatory requirements for Pressure Cars.

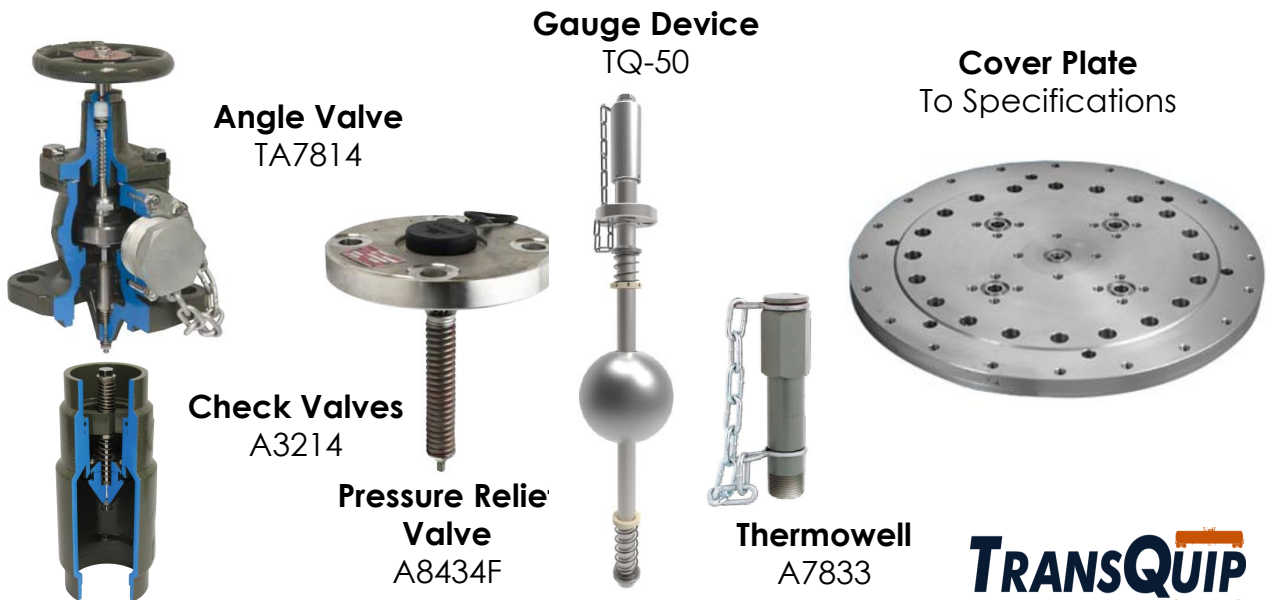


COMPLETE PACKAGES

Liquefied Petroleum Gas (LPG)



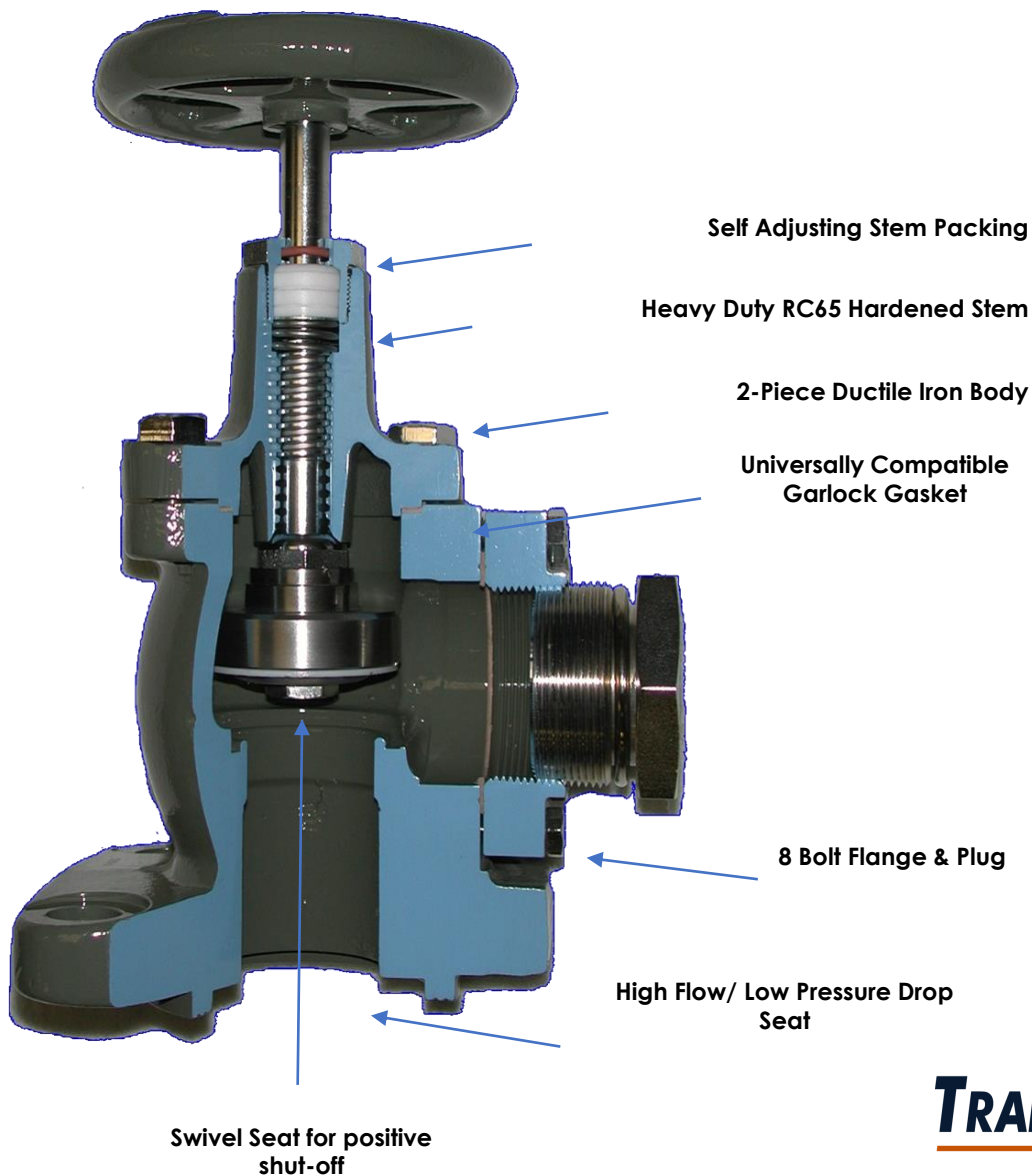
Anhydrous Ammonia (Shear-Off Package)



ANGLE VALVES

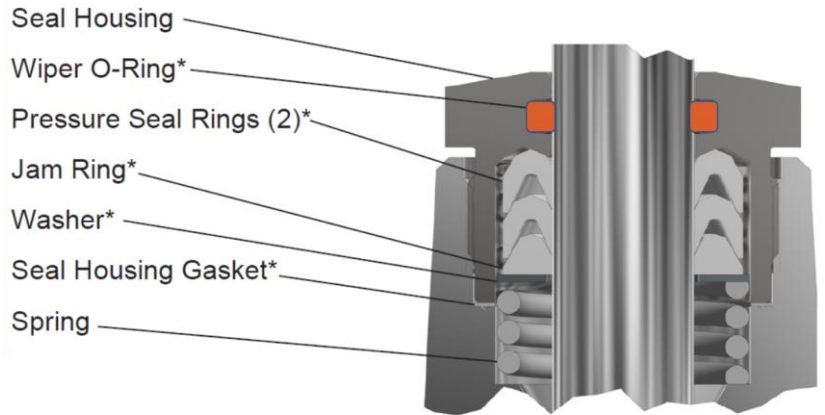
Rego's TA7894P Angle Valve offers long-term, robust low maintenance service. Its 2-piece body facilitates repairs, is self adjusting, self-draining and eliminates the need for expensive O-Ring/ Repair Kits.

Compared to other steel valves, the TA7894Ps ductile iron body provides greater tensile strength, abrasion/ corrosion resistance and shock absorption.

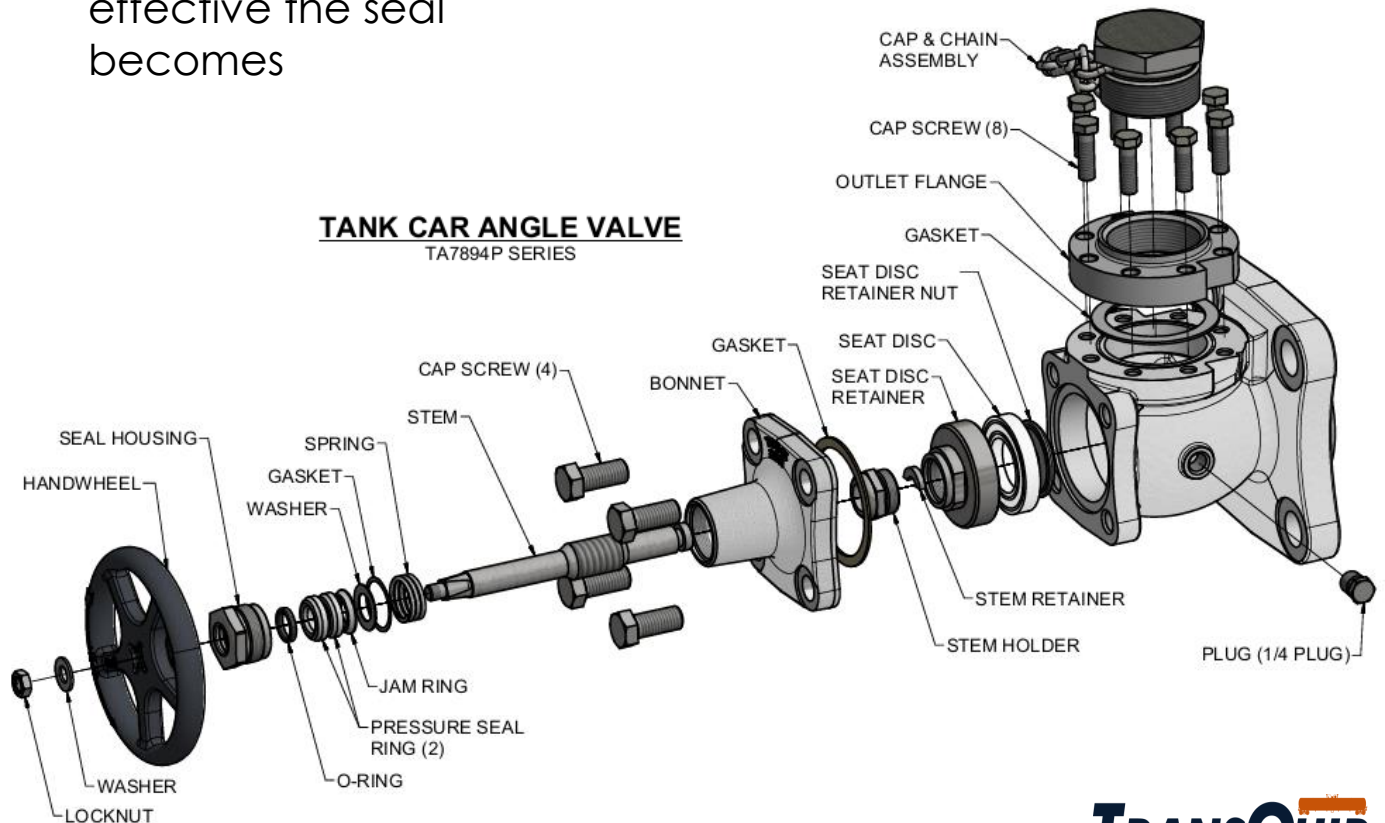


ANGLE VALVES

- Typical stem packing works by repeatedly compressing and stressing the Teflon seals.
- Rego uses a patented spring-loaded 'V' contoured ring to provide a leak-tight seal without need to ever retighten.
- The higher the pressure within the valve, the more effective the seal becomes



TANK CAR ANGLE VALVE TA7894P SERIES

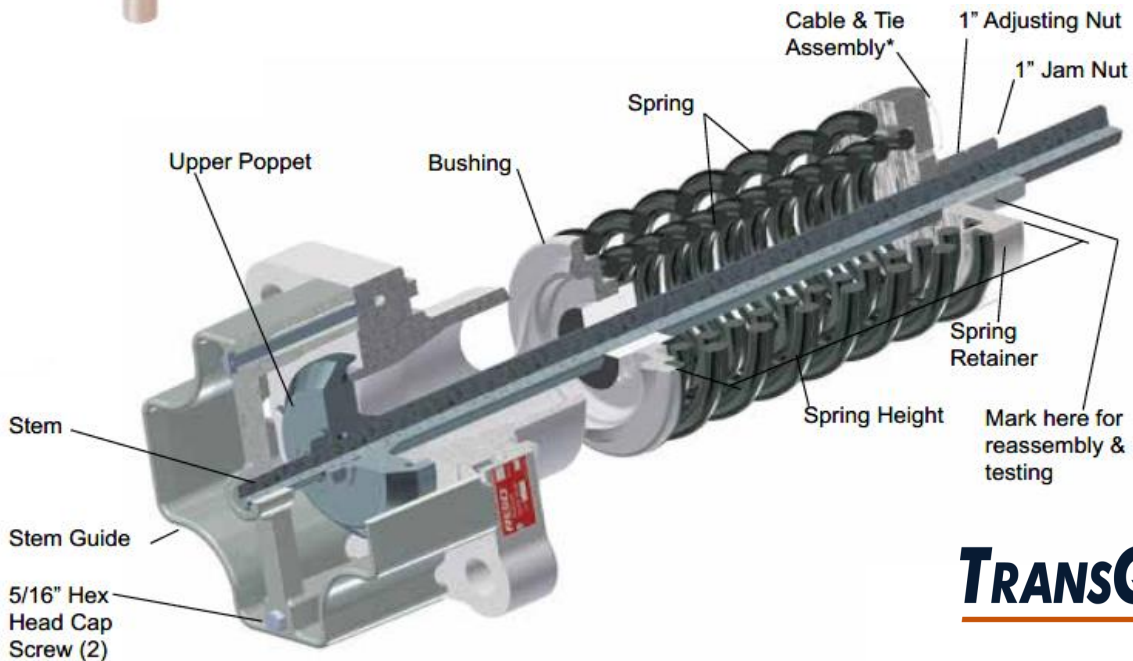


PRESSURE RELIEF VALVES

Rego's A8890 Series Pressure Relief Valve is a 304 Stainless Steel low profile, heavy-duty, PRD with industry leading flow rates. It's dual epoxy coated springs offer extended wear and is designed to keep operating should one of the springs fail. Other engineered features, include an intermediate spring guide for positive reseating, a robust stem, easy access mount fasteners and its ability to mitigate escaping vapor (rather than product) into the atmosphere.



PSIG	SCFM
225	28,563
247.5	31,187
280.5	34,849
300	37,392



GAUGE DEVICE

TransQuip TQ-50 Gauge Device was designed to eliminate all the commonly acknowledged failure points found in existing gauge devices...

- 100% Stainless Steel construction
- Neodymium float magnet
(provides optimal coupling with float)
- Over 1" of collar adjustment
- Acme thread gauge head (easy cap on & off)
- Cushioned springs (eliminate wear on float)
- Innovative securement of Teflon Guide
- Fits various bolt circles



CHECK VALVES

Available in ¾", 2" & 3" – All feature generous flow channels and low pressure drops

*2" Check Valve is available in 45° & 180° deflectors



THERMOWELL & SAMPLE VALVES



ANHYDROUS AMMONIA

Next Generation Containment Package –

Rego Anhydrous Ammonia (Roll-Over) package, represents the industry's safest and most robust solution.

The TA7814 Angle Valve features an innovative clock-wise closing handle which also activates the A3214 Check Valve.

The A8434A Pressure Relief Valve is constructed from stainless steel, has an ultra low 1" profile and a longer spring engineered to minimize stress and cracking.

The Package also includes the TQ-50 Gauge Device and A7833 Thermowell as an option.



TA7814 Angle Valve

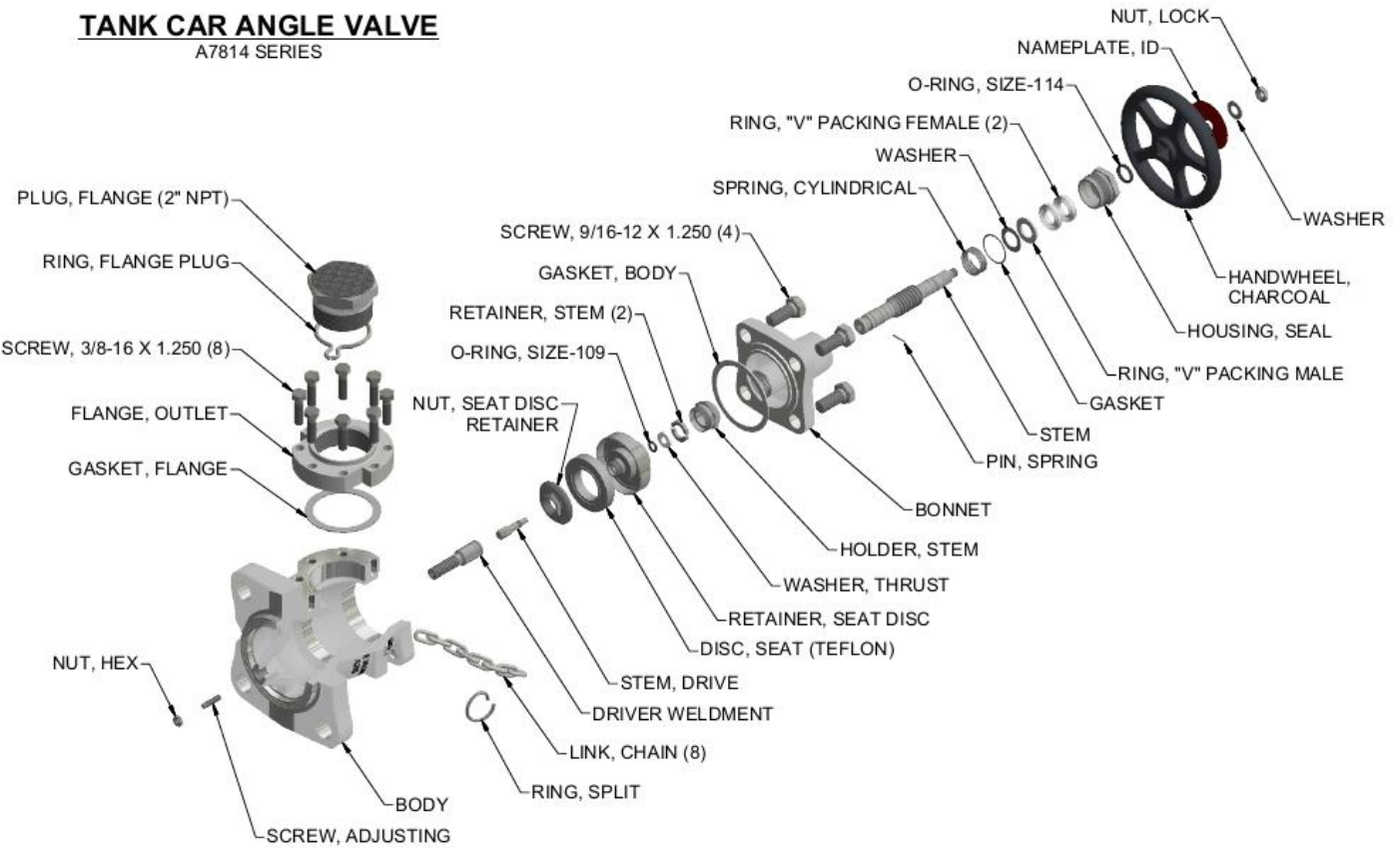
A8434A Pressure Relief Valve



A3214 Check Valve

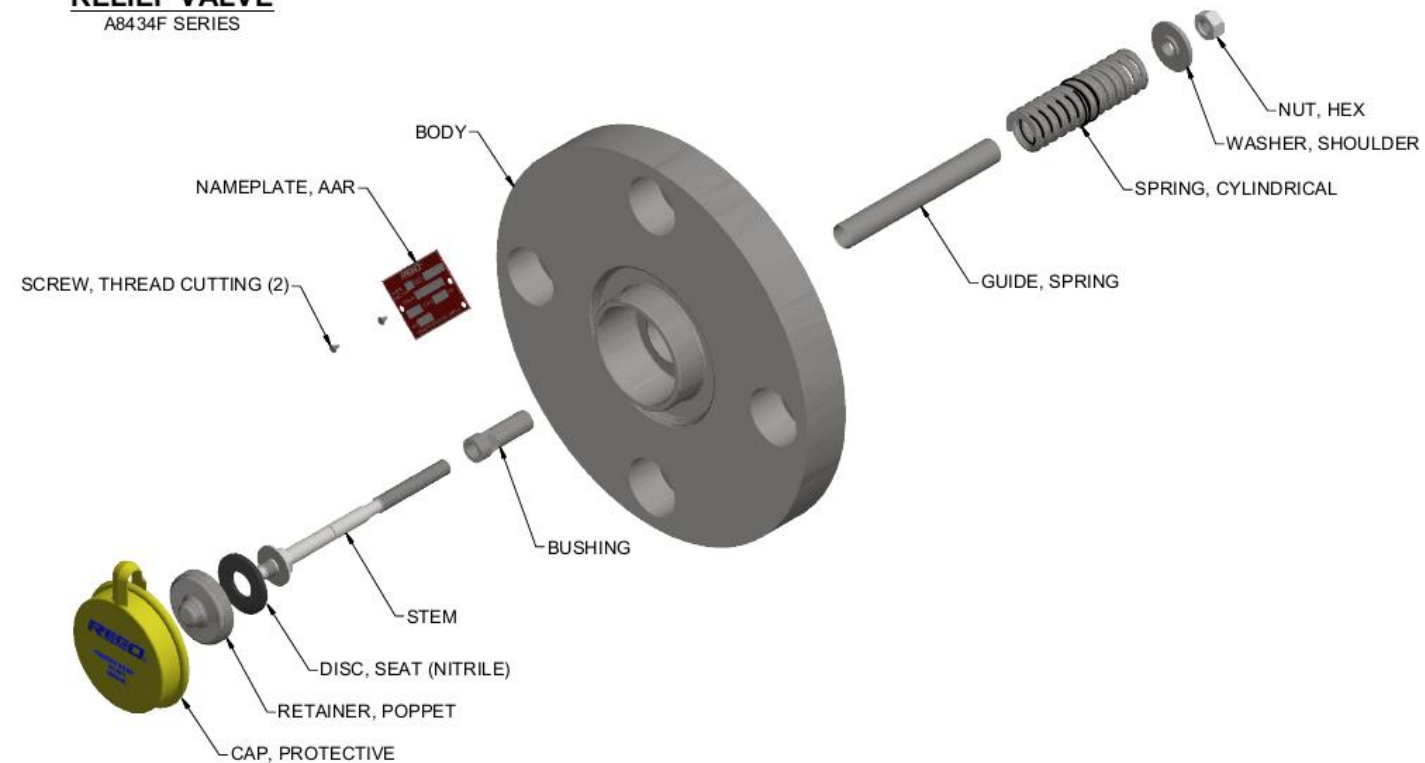
TANK CAR ANGLE VALVE

A7814 SERIES



RELIEF VALVE

A8434F SERIES



SELECTION GUIDE

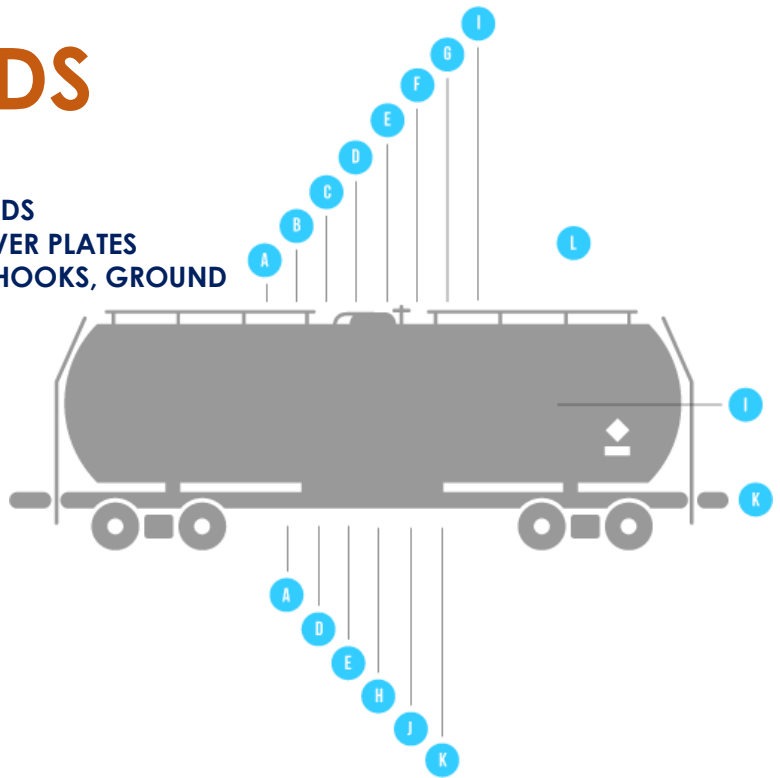
Petrochemical, Agricultural & Fertilizer Tank Car Models

Car Model Attributes	Applications		
	Liquefied Petroleum Gas	Propylene	Anhydrous Ammonia
Car Type	Pressure & Compressed Gases		
Cover Plate	TRQ-2010-23	TRQ-2010-23	TRQ-2013-1101
Liquid Valve	(2) Rego 2" TA7894P	(2) Rego 2" TA7894P	(2) Rego 2" TA7814 w/EA3214L Check
Vapor Valve	(1) Rego 2" TA7894P	(1) Rego 2" TA7894P	(1) Rego 2" TA7814 w/EA3214V Check
Pressure Relief Valve	Rego X8890S-280 (280 PSI STD)	Rego X8890S-300 (300 PSI STD)	Rego A8434FA-280
Vacuum Relief Valve	N/A	N/A	N/A
Gauge Device	TransQuip TQ-50	TransQuip TQ-50	N/A
Themowell	Rego A7833	Rego A7833	N/A
Sample Line	MGM 330	MGM 330	N/A
Liquid Check Valve	(2) Rego A7839	(2) Rego A7839	N/A
Vapor Check Valve	(1) Rego A7837X	(1) Rego A7837X	N/A
Sample Line Check	Rego 3/4" A7835	Rego 3/4" A7835	N/A

* This selection guide is for illustrative purposes. For specific car types, model/ part numbers, valve, seat or gasket materials, please consult TransQuip

ALL YOUR NEEDS

- A. NOZZLE CAPS, PLUGS, SADDLES & SKIDS
- B. MANWAYS, MANWAY COVERS/ COVER PLATES
- C. EYEBOLTS, SEAL PINS, DOME PINS, J-HOOKS, GROUND LUGS & STUDS
- D. DRY LOCK® & QUICK DISCONNECT
- E. TRANSZCOAT, COATINGS & DECALS
- F. CHEMRAZ®, GASKETS & O-RINGS
- G. GENERAL SERVICES VALVES
- H. PRESSURE CAR VALVES
- I. LEVEL DEVICES
- J. VALVE REPAIR KITS
- K. TANK CAR PARTS
- L. HEATING COMPONENTS



Click here for the Rego Catalogue

REGO®

Main Office:

3360-C Lake Shore Boulevard
Jacksonville, Florida 32210

Phone: 904-388-6699

Web: www.transquip.com

Distribution:

4619 North Sam Houston
Parkway East

Houston, Texas 77032

Phone: 281-442-8000

Email: sales@transquip.com

CONTACT US

TRANSQUIP
U.S.A. INC