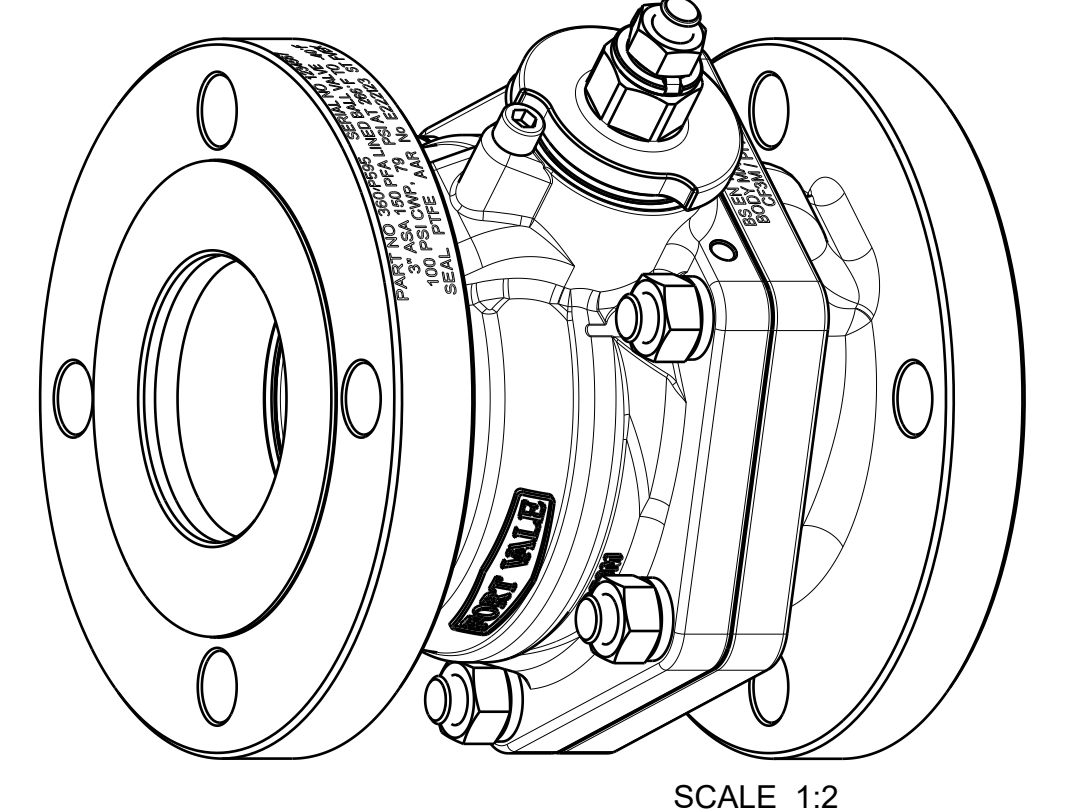
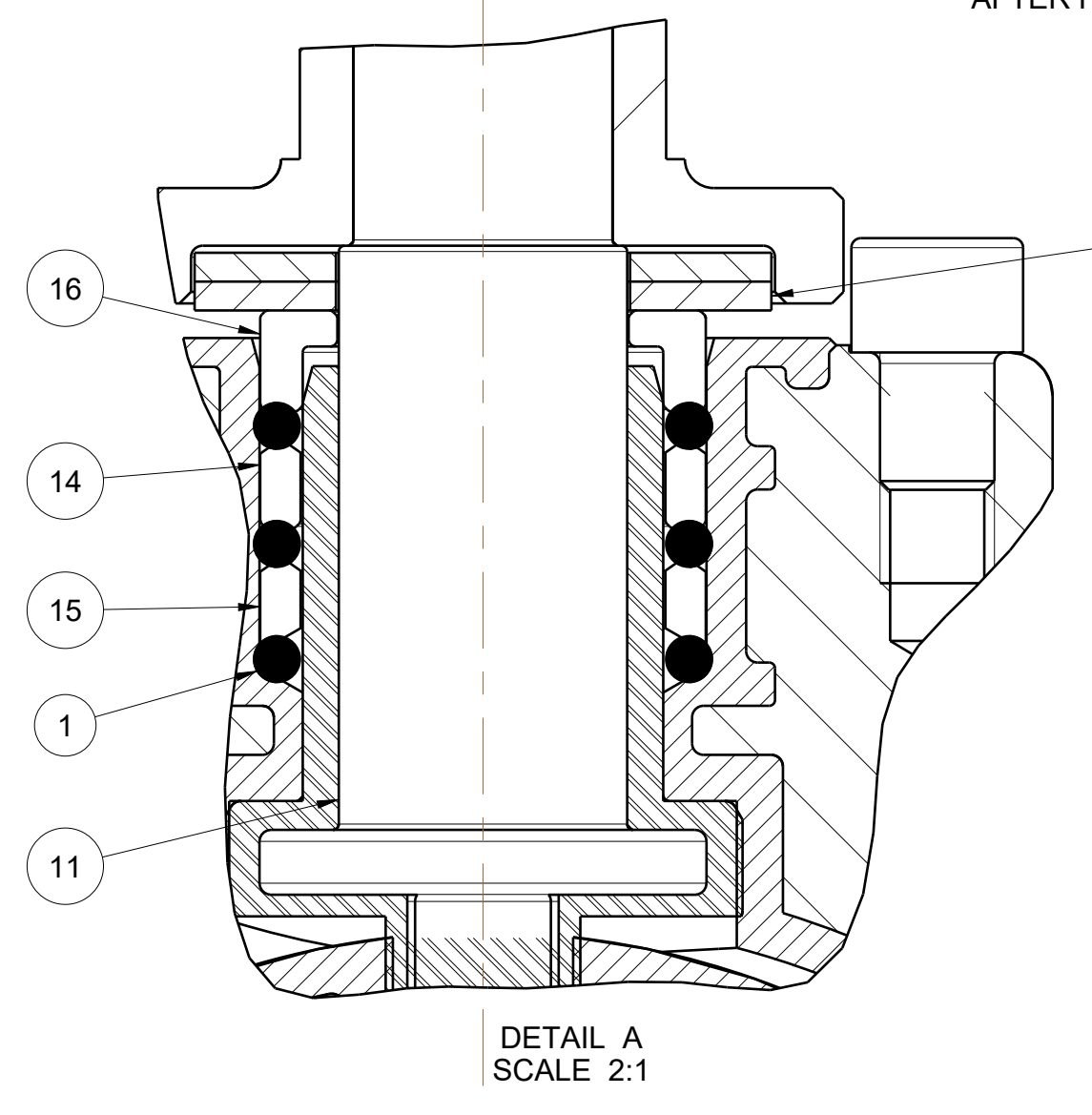
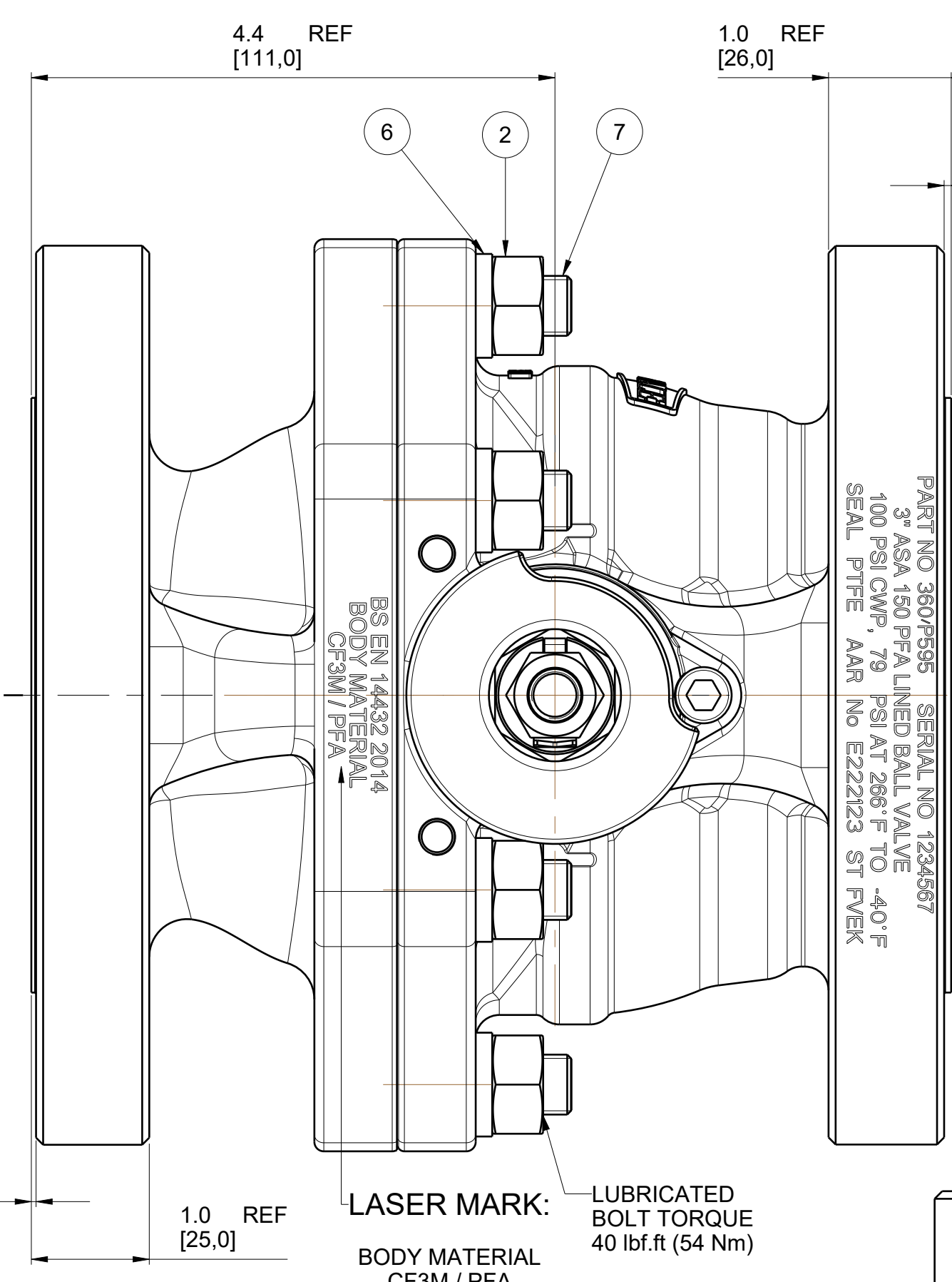
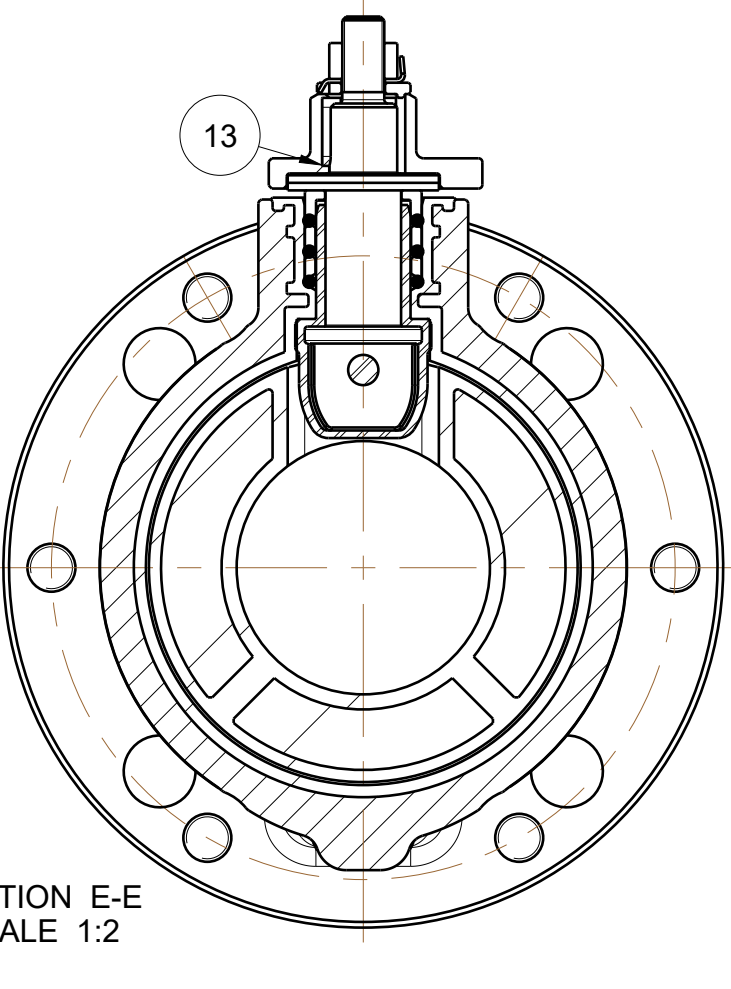
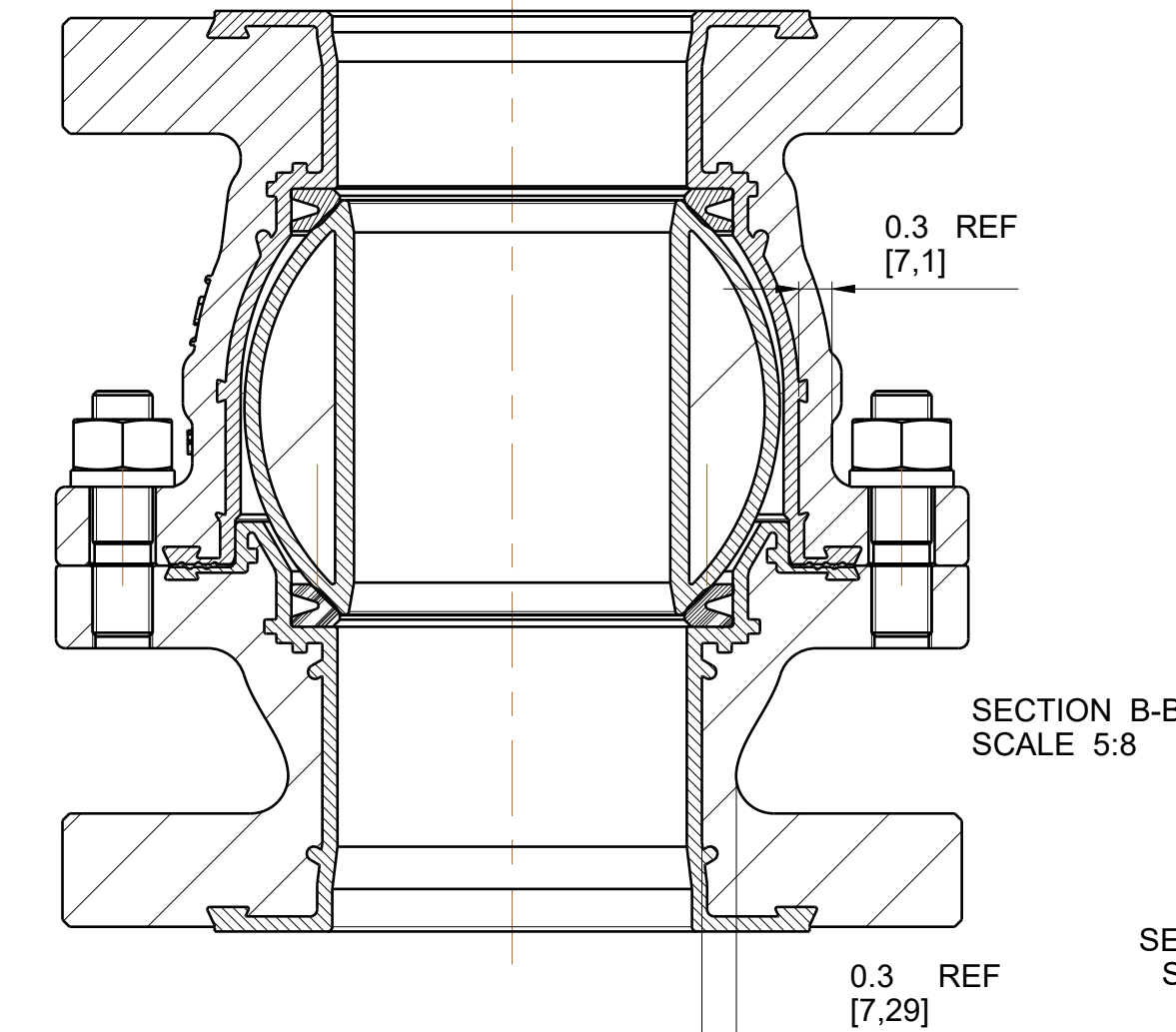
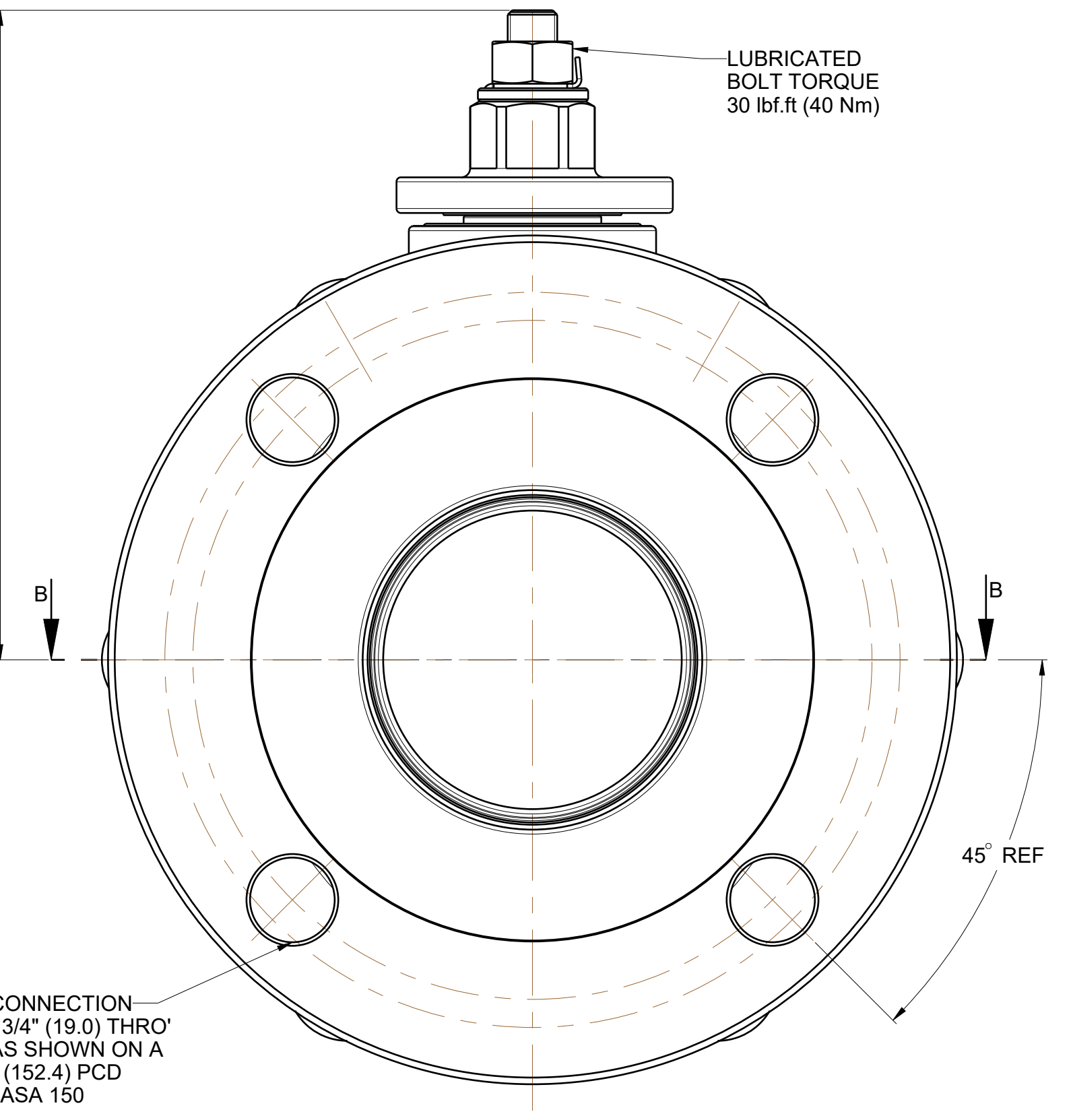
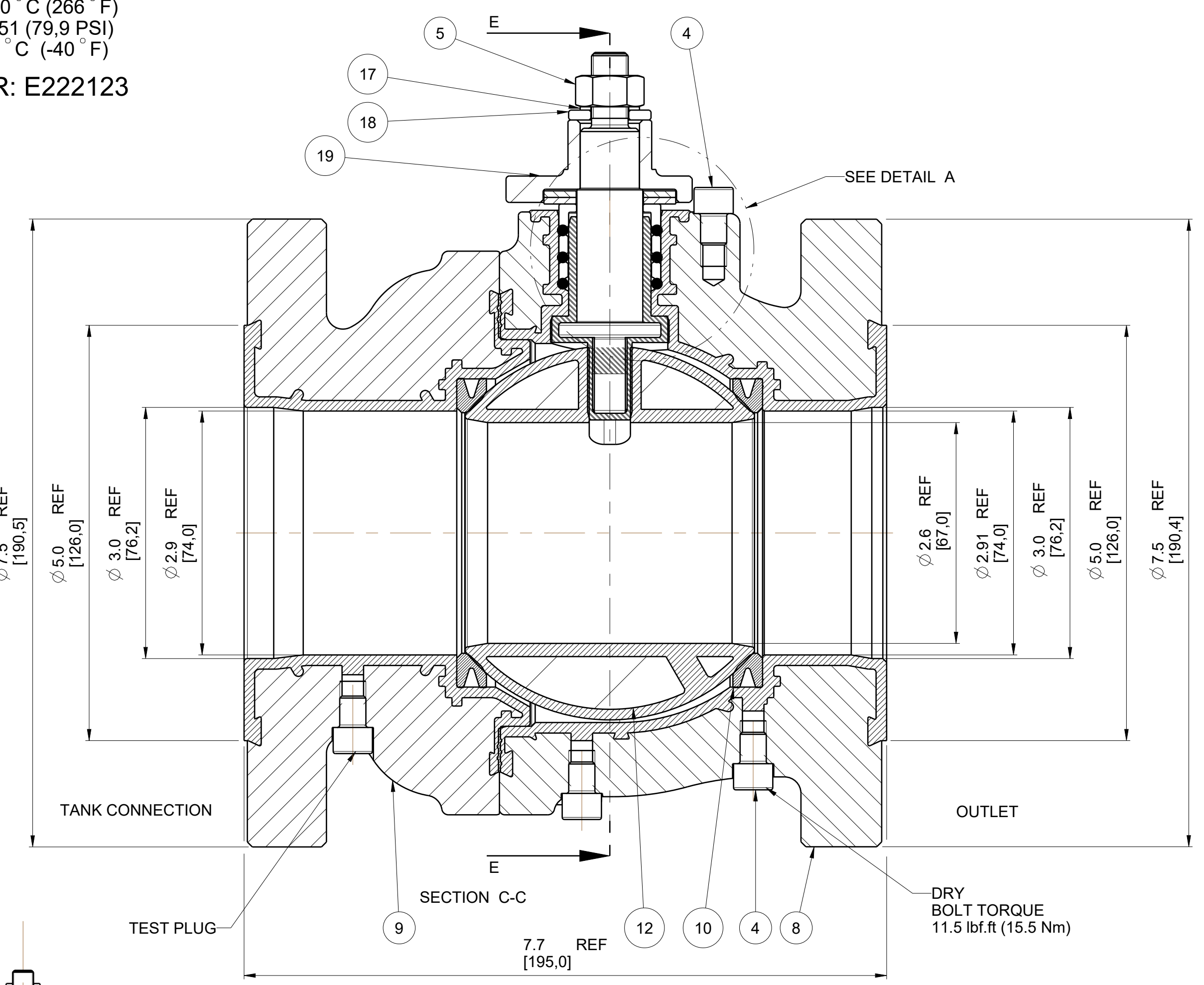
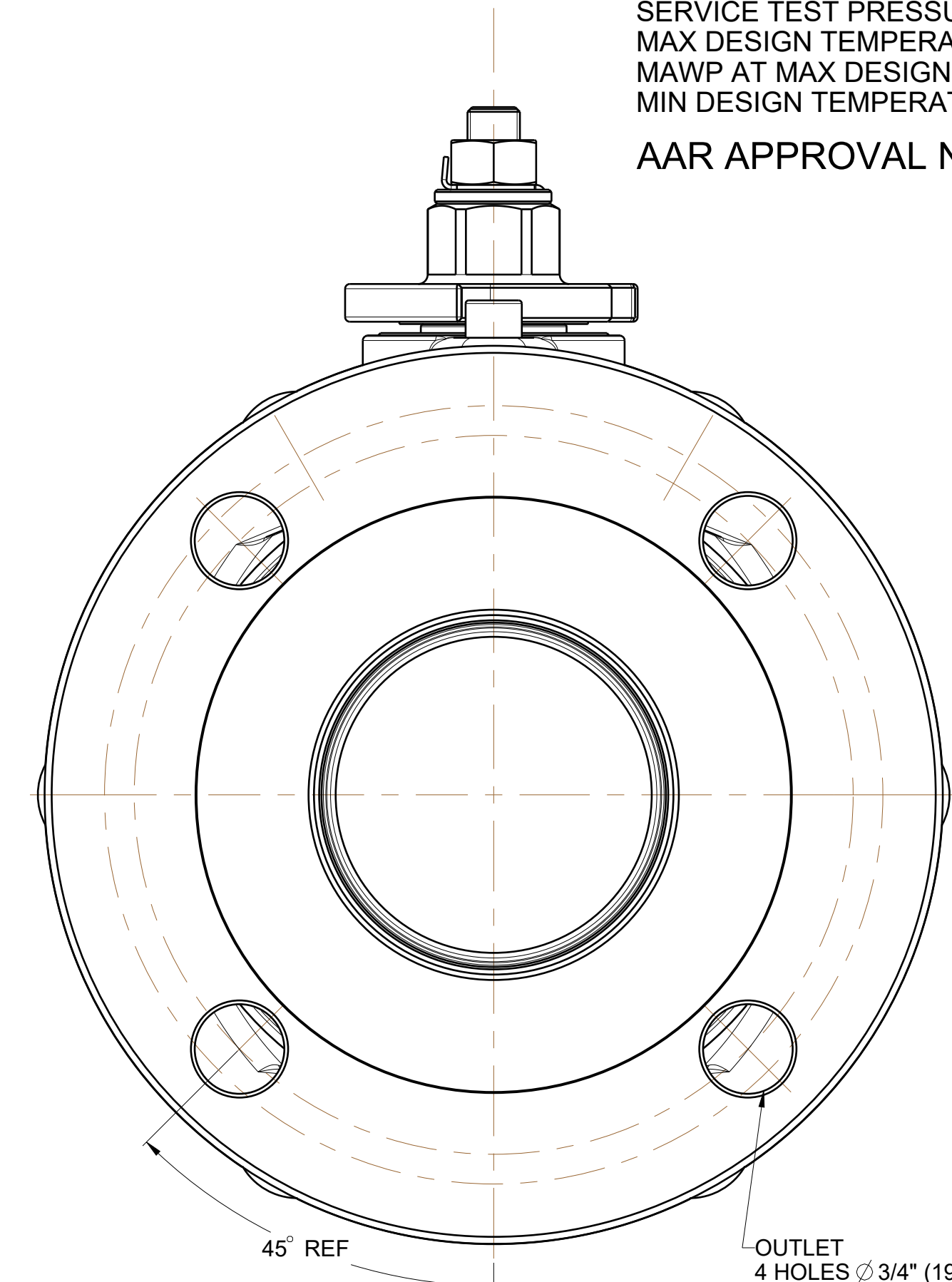


DESIGN CODES: ASME B16.34 ASME VIII DIV1 BS EN 14432 2014
 COLD RATING PRESSURE (CWP) : 6,90 BAR (100,1 PSI)
 SERVICE TEST PRESSURE : 11,00 BAR (159,5 PSI)
 MAX DESIGN TEMPERATURE : 130 °C (266 °F)
 MAWP AT MAX DESIGN TEMP : 5,51 (79,9 PSI)
 MIN WP AT MAX TEMPERATURE : -40 °C (-40 °F)
 AAR APPROVAL NUMBER: E222123

DRAWING STATUS		Production	
REVISION	01	SIG	D BAILEY
		11-Nov-22	
AAR NO E222123 ADDED, CF3M / PFA WAS PFA / CF8M			



Index	Part Number	Description	Material	Qty
19	370/P558	HANDLE BOSS AND STOP PLATE	304/316 STST	1
18	370/P554	RETAINING WASHER	304L/316L STST	1
17	370/P553	TAB WASHER	304/316 STST	1
16	370/P514	TOP STUFFING COLLAR	316 STST	1
15	370/P513	BOTTOM STUFFING COLLAR	PEEK	1
14	370/P512	TOP STUFFING COLLAR	PEEK	1
13	370/P511	5MM KEYWAY KEY	A4-70	1
12	360/P508	PFA COATED BALL	CF3M STST / PFA	1
11	360/P506	PFA LINED SPINDLE	316 STST / PFA	1
10	360/P505/3	MAIN SEAL	TFM 1600	2
9	360/P504	MACHINED LINED BODY INLET	CF3M / PFA	1
8	360/P501	MACHINED LINED BALL VALVE BODY	CF3M / PFA	1
7	312/1037	1/2" UNF X 52mm LONG	SA193 B8 CLASS1	6
6	5213-034	1/2" SPRING WASHER	A2 (304 STST)	6
5	5122-178	7/16"-20 UNF FULL NUT	304 STST	1
4	5121-241	5/16" UNC x 0.38" CAP HEAD BOLT	A2-70	4
3	5113-041	20mm BELLEVEU WASHER	301 STST	2
2	5112-177	1/2"-20 UNF FULL NUT	304 STST	6
1	5005-654	BS214 PTFE O RING	VIRGIN PTFE	3

MATERIAL
 CF3M STAINLESS STEEL
 WITH PFA LINED WETTED PARTS

NOTE!
 LASER MARKING
 DETAILS:-

PART NO 360/P595 SERIAL NO 1234567
 3" ASA 150 PFA LINED BALL VALVE
 100 PSI CWP, 79 PSI AT 286°F TO -40°F
 SEAL PTFE AAR No E222123 ST FVEK

FORT VALE

SALES@FORTVALE.COM WWW.FORTVALE.COM
 ENGLAND, USA, CHINA
 NETHERLANDS, SINGAPORE

© FORT VALE ENGINEERING LTD 2021. DO NOT SCALE - IF IN DOUBT ASK

UNLESS OTHERWISE STATED		FIRST ANGLE PROJECTION	MATERIAL: PFA / CF8M
X.X ±0.5	SURFACE FINISH 3.2um MAX	ISO9001:2015 REGISTERED FIRM: LRQ4007111	SCALE: 7:8
X.XXX ±0.25	CORNER RADII 0.8		CHECKED: DVN: 37548
ANGLES ±0.5°	CORNER CHAMFER 1.0 X 45°		SHEET 1 OF 1
REMOVE ALL BURRS AND SHARP EDGES			DATE: 13-Dec-21
DESCRIPTION			DRG.NO.
3" ASA 150 PFA LINED BALL VALVE			
FLANGE TO FLANGE FULL BORE			
			360/P595
			A1 UNITS mm