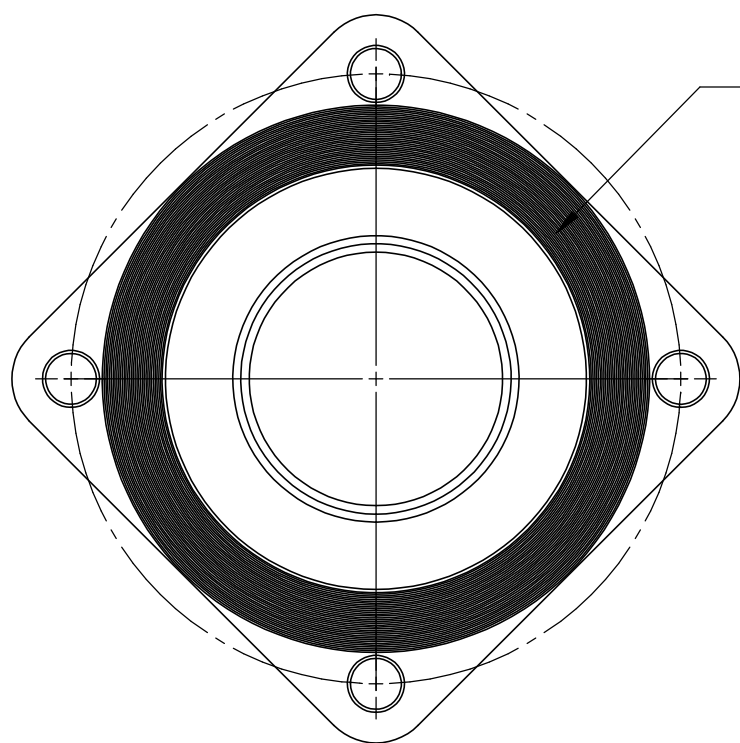
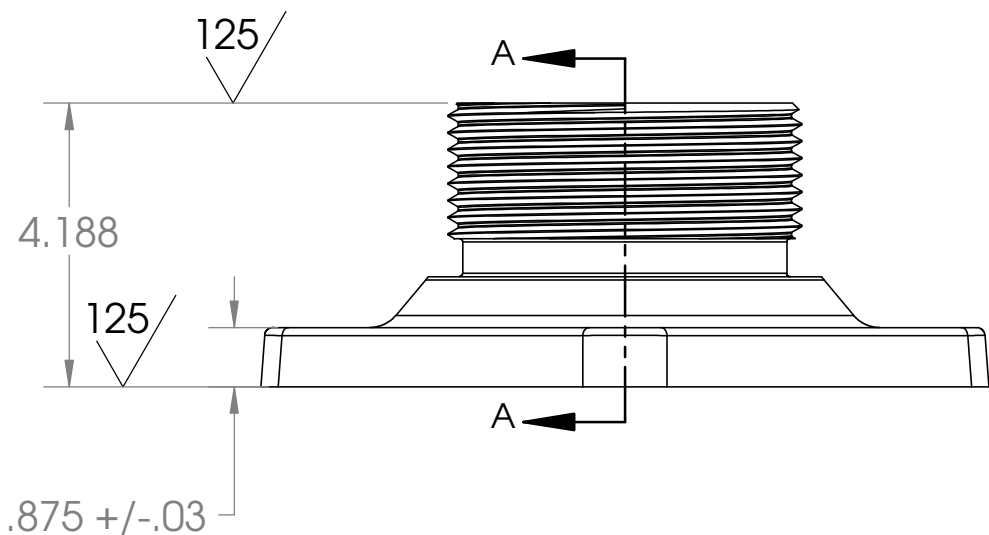
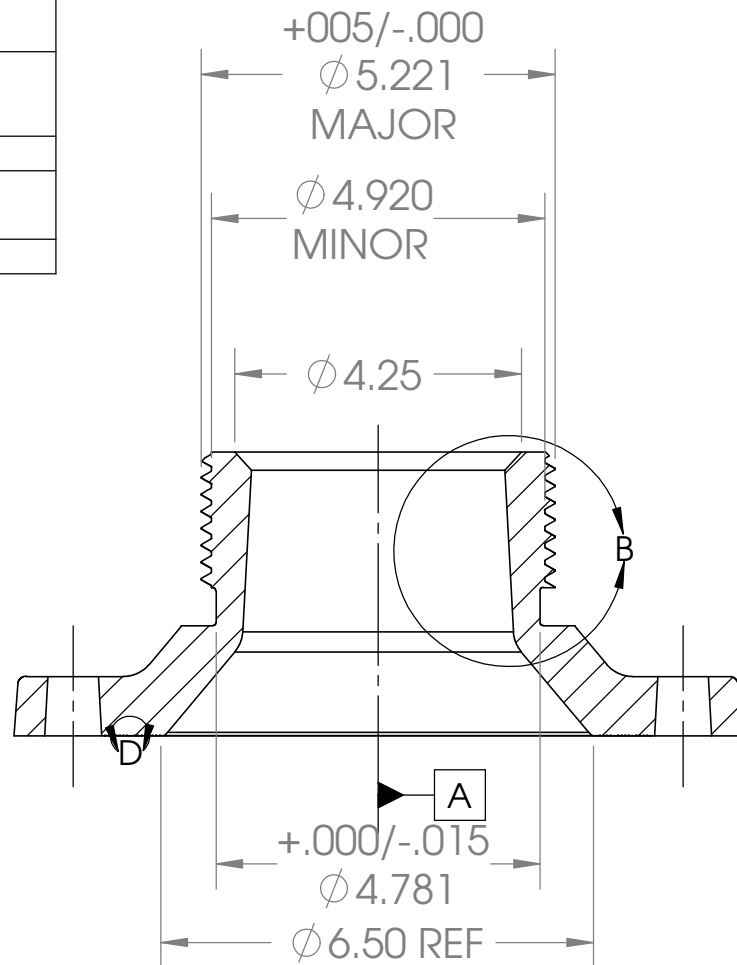


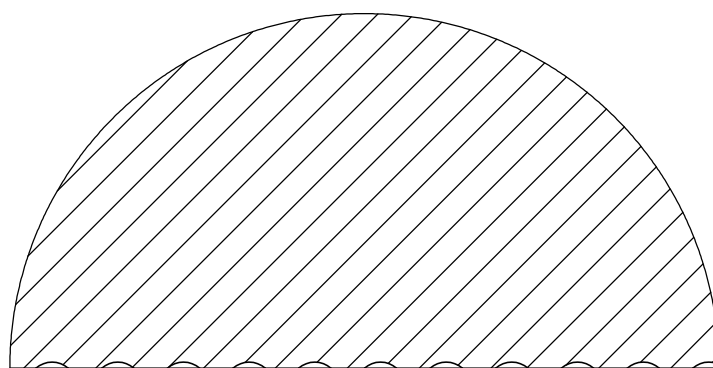
REVISIONS				
ZONE	REV.	DESCRIPTION	DATE	APPROVED
	A	ADDED NOTE #4 FINISH TO TOP OF FLANGE	4/9/2013	
	B	REVISED NOTE #4 REMOVED 125-500 MICROINCHES	6/10/2014	
	C	REDRAWN 3-D MODEL AND 2 SHEETS	1/17/2016	



SEE NOTE 4

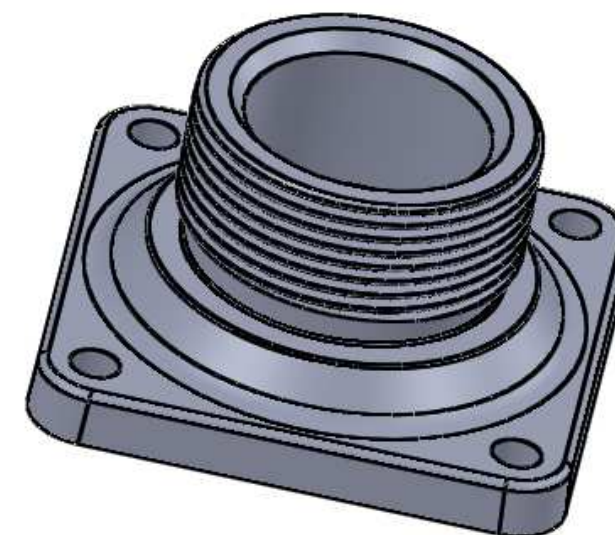
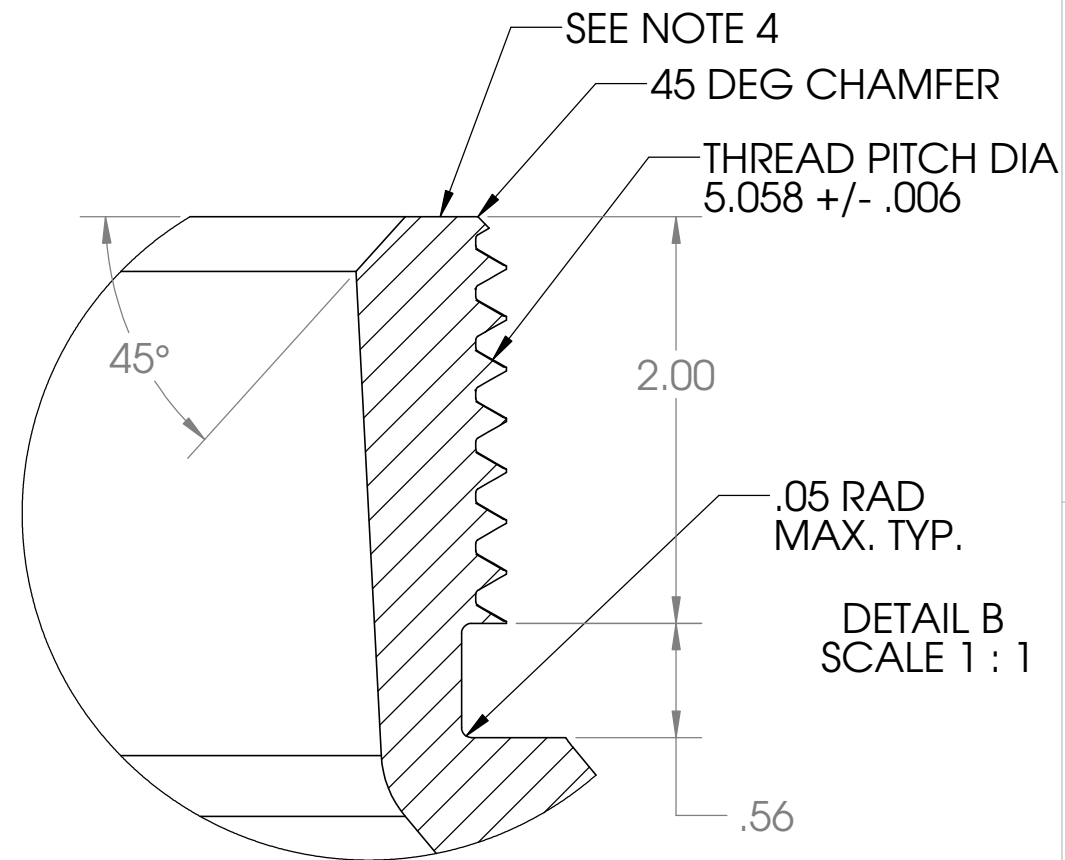


SECTION A-A
SCALE 1 : 3



.025-.040
SPACING

DETAIL D
SCALE 6 : 1



SEE SHEET 2 FOR CASTING DRAWING

NOTES- MACHINING. SEE SHEET 2 FOR CASTING

- GASKET SURFACE TO BE TRUE & FLAT WITHIN .006 IN. T.I.R
- BREAK ALL SHARP CORNERS.
- THREADS ARE 0.020 IN. LESS THAN THE 5-1/4-4 UN-2A OF ANSI 18.1.1
- GASKET SEALING SURFACE ON THREADED END AND TOP FLANGE SURFACE IS TO HAVE 24 TO 40 CONCENTRIC SERRATIONS PER INCH. THE CUTTING TOOL SHALL HAVE A RADIUS OF 0.06 TO .010. THE APPARENT SURFACE ROUGHNESS IS TO BE 125 MICROINCHES MIN.

PROPRIETARY AND CONFIDENTIAL
THE INFORMATION CONTAINED IN THIS DRAWING IS THE SOLE PROPERTY OF TRANQUIP INC. ANY REPRODUCTION IN PART OR AS A WHOLE WITHOUT THE WRITTEN PERMISSION OF TRANQUIP INC. IS PROHIBITED.

		UNLESS OTHERWISE SPECIFIED:	NAME	DATE	TransQuip USA Inc. NOZZLE - OUTLET 4 IN. NOM. (E18) CASTING / MACHINING
		DIMENSIONS ARE IN INCHES TOLERANCES: X.XX = ±.03 X.XXX = ±.015 X.XXXX = ±.005	DRAWN		
		INTERPRET GEOMETRIC TOLERANCING PER:	CHECKED		
		MATERIAL	ENG APPR.		
NEXT ASSY	USED ON	FINISH	MFG APPR.		SIZE B DWG. NO. TRQ-9-SS REV C
APPLICATION		DO NOT SCALE DRAWING	Q.A.		
			COMMENTS:		SCALE: 1:4 WEIGHT: SHEET 1 OF 2